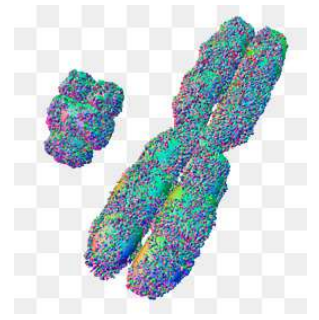


Name: _____

Class: _____

Total Possible Marks: 13

Chromosomes



- _____
10
1. Most (a) cells in the human (b) body have a structure called the (c) nucleus. This contains your (d) genetic material which is another way of saying the (e) instructions that you need to grow and (f) develop. This material is stored in the form of entities called (g) chromosomes. Body cells normally have two copies of each chromosome, one from the organism's (h) mother and one from the organism's (i) father, so humans have (j) two copies of chromosome number 1, two copies of chromosome number 2 and so on.

father
instructions

nucleus
mother

genetic
cells

body
two

chromosomes
develop

- _____
1
2. Chromosomes are found in the cell's nucleus, is this true or false?

☒ A True

☐ B False

- _____
1
3. Chromosomes are usually found individually in body cells, is this true or false?

* This is false, chromosomes are usually found in pairs in body cells

☐ A True

☒ B False

- _____
1
4. Put these biological entities in order of size from smallest to largest

A. 4 Nucleus (cell)

B. 3 Chromosome

C. 2 Gene

D. 1 DNA

E. 5 Organism