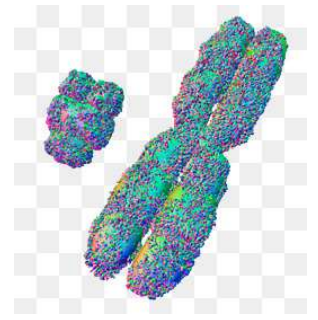


Name: \_\_\_\_\_

Class: \_\_\_\_\_

Total Possible Marks: 13

# Chromosomes



- \_\_\_\_\_  
10
1. Most (a) \_\_\_\_\_ in the human (b) \_\_\_\_\_ have a structure called the (c) \_\_\_\_\_. This contains your (d) \_\_\_\_\_ material which is another way of saying the (e) \_\_\_\_\_ that you need to grow and (f) \_\_\_\_\_. This material is stored in the form of entities called (g) \_\_\_\_\_. Body cells normally have two copies of each chromosome, one from the organism's (h) \_\_\_\_\_ and one from the organism's (i) \_\_\_\_\_, so humans have (j) \_\_\_\_\_ copies of chromosome number 1, two copies of chromosome number 2 and so on.

father  
instructions

nucleus  
mother

genetic  
cells

body  
two

chromosomes  
develop

- \_\_\_\_\_  
1
2. Chromosomes are found in the cell's nucleus, is this true or false?
- ☐ (A) True
- ☐ (B) False

- \_\_\_\_\_  
1
3. Chromosomes are usually found individually in body cells, is this true or false?
- ☐ (A) True
- ☐ (B) False

- \_\_\_\_\_  
1
4. Put these biological entities in order of size from smallest to largest
- A. Nucleus (cell)
- B. Chromosome
- C. Gene
- D. DNA
- E. Organism